



# GREEN ATLANTIC PVC

TRIM BOARDS | SHEETS | MOULDINGS

PREMIUM PVC WITH HIGHER STANDARDS

BUILDING 2 - STAIR A

BUILDING 2  
UNITS  
2301 - 2304  
2301 - 2304  
2301 - 2304



## About Green Atlantic PVC

For more than 18 years, the Green Atlantic PVC manufacturing facility has shaped the future of premium PVC and vinyl products. Our cutting-edge factory, in full operation since 2007, ranks among the world's most advanced PVC production facilities. The Green Atlantic PVC brand launched in 2018 with a clear vision: unmatched quality, powered by the latest technology and uncompromising standards.

We stand apart through a smarter, direct-to-you distribution model. By partnering exclusively with one-step distributors, we bypass traditional markups and deliver top-tier trim boards at prices that make sense for everyone. No inflated costs. Just exceptional value.



Innovation is in our DNA. Green Atlantic PVC pioneered game-changing products, including Black PVC, Precision-extruded 45° corners, 2 mm nailing flange material, 24-foot trim boards, And a growing lineup of industry-first solutions

Put Green Atlantic PVC to work on your next job and discover why we're redefining quality, affordability, and performance in the PVC industry.



## The Smart Way to Trim

Green Atlantic PVC trim boards, mouldings, sheets and corners are a durable and cost-effective alternative for your next project.

- With Green Atlantic PVC products, you don't have to worry about decay, rot or insect damage.
- Our products can be used anywhere wood can be used. They don't have to be painted, but hold up well to paint if you choose.
- Deforestation is unnecessary for manufacturing, the PVC can be recycled, and it has an extended useful lifespan compared to wood.





## High Quality & Affordable

Green Atlantic PVC is driven by a vision of sustainability and prosperity. We craft enduring products that combine uncompromising quality with fair pricing. By never compromising on standards, we uphold a straightforward business philosophy that fills us with pride.

Quality control lies at the heart of our manufacturing process and remains the cornerstone of our continued success. Our state-of-the-art facility leverages cutting-edge technology, including automated feed hoppers and precision edge-sealing systems, to deliver flawless results every time.

When you choose Green Atlantic PVC, you can set aside any concerns about product integrity. Consistency is the foundation of excellence, and we are committed to earning your trust as the premier name in PVC manufacturing.

To maintain the industry's highest benchmarks, we partner with Intertek labs for rigorous, independent third-party testing—ensuring every product meets exceptional standards.



## Durable & Versatile

Green Atlantic PVC sheets are available in thicknesses ranging from 1 mm to 1-1/2 inches, to every thing in between. Our sheet goods come standard in 10' and 20' lengths.

From crafting custom columns to sheathing entire homes, PVC sheets offer a superior alternative to traditional building materials. The inherently rot-resistant nature of Green Atlantic PVC delivers a stunning, lifelong finish that stands the test of time.

These versatile sheets excel in diverse applications, including signage, furniture, and electrical block components. Green Atlantic PVC is equipped to supply large volumes of PVC to meet the needs of any industry.



Every Green Atlantic sheet is delivered free of dents and scratches, protected by our signature PVC film. Quality and pride in craftsmanship are core to our company's values.

You can always count on Green Atlantic PVC for some of the highest-quality tested trim boards in the industry.

# Extruded Corner Boards

Green Atlantic PVC sets the industry standard with the widest selection of extruded corners available from any supplier. Choose from our 4" and 6" extruded outside corners, both featuring an integrated nailing flange and siding pocket for secure, streamlined installation—each supplied in full 20' lengths.

We proudly introduced the world's first 45° extruded inside and outside corners, perfect for breakfast nooks, bay windows, and any architectural bump-out requiring precise angular transitions. Our 6" outside corners are also available in striking black for bold design statements. Inside corners come in both 90° and 45° (135° actual) configurations to accommodate every layout.

No other manufacturer matches our range, and our commitment to innovation ensures we're continuously developing new solutions to elevate your exterior projects.



NOMINAL SIZE	ACTUAL SIZE	LENGTH
6" Extruded Corner	1 1/8" x 5 1/2"	20'
45° 1 1/2" Inside Corner	1 1/2 X 1 1/2" ID (Refer to CAD)	20'
90° 1 1/2" Inside Corner	1 1/2 X 1 1/2" ID (Refer to CAD)	20'
45° 6" Extruded Outside Corner	5 1/2"	20'



# Sheets

Green Atlantic sheets are lightweight, versatile, and durable. This makes them ideal for use in many applications such as advertising, cabinet making, and construction.

The robust surfaces and high durability make them suitable for interior and exterior applications. Sheets can be manufactured into many different lengths and thicknesses for custom ordered applications.



ACTUAL SIZE	LENGTH
1/4" x 4'	10'
3/8" x 4'	10'
1/2" x 4'	10'
5/8" x 4'	10'
3/4" x 4'	10'
1" x 4'	10'
1 1/4" x 4'	10'
1/4" x 4'	20'
3/8" x 4'	20'
1/2" x 4'	20'
5/8" x 4'	20'
3/4" x 4'	20'
1" x 4'	20'
1 1/4" x 4'	20'

# Corner Boards

Green Atlantic PVC corner boards are available with or without a siding pocket, seamlessly complementing our trim boards and sheets. Each corner is precision-folded and glued from a single sheet of PVC—eliminating open seams for superior strength and a flawless finish. Engineered to be both durable and elegant, they will never split or separate at the joint.



NOMINAL SIZE	ACTUAL SIZE	LENGTH
5/4" x 4"	1" x 3 1/2"	20'
5/4" x 4" (w/ Siding Rabbet)	1" x 3 1/2"	20'
5/4" x 6"	1" x 5 1/2"	20'
5/4" x 6" (w/ Siding Rabbet)	1" x 5 1/2"	20'
1" Trim Corner	1/4" x 1 1/4"	18'
4" Stealth Hidden Fastener	1 1/8" x 3 1/2"	20'

# Mouldings

Green Atlantic PVC features one of the most innovative and expansive moulding selections in the industry. Designed to perfectly complement our trim boards and sheets, our mouldings are produced in standard 18-foot lengths—surpassing the typical 16-foot offerings from competitors. Select profiles are even available in impressive 24-foot lengths. Driven by innovation, we continuously develop new products to set the standard and lead the market.



PRODUCT NUMBER	DIMENSIONS	
GA217 Panel	5/8" x 1 3/4" x 18'	
GA164 Basecap	11/16" x 1 1/8" x 18'	
GABP Beaded Planking	3/8" x 5 1/2" x 18'	
GA001 Bead Board	1/2" x 5 1/8" x 18'	
GA002 Stealth Bead Board	1/2" x 6" x 18'	
GA7467 Casing / Lineal	1 1/8" x 3 1/2" x 18'	
GA7966 Casing / Lineal	1 1/8" x 5 1/2" x 18'	
Garage Door Thermostop	7/16" x 2" x 18'	
GA2590 Backband Casing	1 3/16" x 4 1/2"	

PRODUCT NUMBER	DIMENSIONS	
GA51 2 1/4" Crown	9/16" x 2 1/4" x 18'	
GA49 3 5/8" Crown	9/16" x 3 5/8" x 18'	
GA45 4 5/8" Crown	9/16" x 4 5/8" x 18'	
GA47 5 1/2" Crown	9/16" x 5 1/2" x 18'	
GAPC Pediment Crown	2" x 2 7/8" x 18'	
GA68 Rams Crown	1 13/32" x 2 1/16" x 18'	
GA6390 Historic Sill	1 3/4" x 2 1/32" x 18'	
GA937 Sill Nose	1 3/8" x 4 5/16" x 18'	
GA 7974 Sill Nose	1 1/4" x 2 1/16" x 18'	
GA948 Replacement Sill	1 1/4" x 4 5/16" x 18'	
Baluster	1 1/2" x 1 1/2" x 18'	

PRODUCT NUMBER	DIMENSIONS	
GA75 Bed	9/16" x 1 5/8" x 18'	
GA180 Brick Mould	1 1/4" x 2" x 18'	
GA 183 Brick Mould W/J	1 1/4" x 3" x 18'	
GACS Colonial Shoe	1 1/16" x 1 1/2" x 18'	
GA093 Cove	3/4" x 3/4" x 18'	
GA197 Drip Cap	1 1/16" x 1 5/8" x 18'	
GAFA Flat Astragal	13/32" x 2 3/8" x 18'	
GA287 Rake	1 1/16" x 2" x 18'	
GA210 Shingle	1 1/16" x 1 5/8" x 18'	
GA105 Quarter Round	3/4" x 3/4" x 18'	
GAWT Water Table	2" x 2 3/4" x 18'	

# Sealed Edge Trim

Green Atlantic trim has innovatively sealed edge technology which provides clean smooth edges, resists dirt, and makes boards easier to clean if dirt collects on the edges over time.



NOMINAL SIZE	ACTUAL SIZE	LENGTH
1" x 3"	3/4" x 2 1/2"	18'
1" x 4"	3/4" x 3 1/2"	18'
1" x 5"	3/4" x 4 1/2"	18'
1" x 6"	3/4" x 5 1/2"	18'
1" x 8"	3/4" x 7 1/4"	18'
1" x 10"	3/4" x 9 1/4"	18'
1" x 12"	3/4" x 11 1/4"	18'
1" x 15"	3/4" x 14 1/4"	18'
1" x 16"	3/4" x 15 1/4"	18'
5/4" x 4"	1" x 3 1/2"	18'
5/4" x 5"	1" x 4 1/2"	18'
5/4" x 6"	1" x 5 1/2"	18'
5/4" x 8"	1" x 7 1/4"	18'
5/4" x 10"	1" x 9 1/4"	18'
5/4" x 12"	1" x 11 1/4"	18'
5/4" x 16"	1" x 15 1/4"	18'
6/4" x 4"	1 1/4" x 3 1/2"	18'
6/4" x 6"	1 1/4" x 5 1/2"	18'
6/4" x 8"	1 1/4" x 7 1/4"	18'
6/4" x 10"	1 1/4" x 9 1/4"	18'
6/4" x 12"	1 1/4" x 11 1/4"	18'



# Black Trim, Sheets, and Mouldings

Pioneering the industry, Green Atlantic is the first manufacturer to produce fully black PVC trim, sheets, and mouldings. Offered in 18' lengths and various widths, every piece upholds our white PVC's legendary durability and UV protection, with edges perfectly sealed. Complete the look with our array of black mouldings, corners, column wraps, and coordinating plugs for a striking, high-end aesthetic that stands the test of time.



## MOULDINGS

PRODUCT	DIMENSIONS
Historic Sill	1 3/4" x 2 1/32" x 18'
3 5/8" Crown	9/16" x 3 5/8" x 18'
Rams Crown	1 13/32" x 2 1/16" x 18'
Basecap	11/16" x 1 1/8" x 18'
Bed	9/16" x 1 5/8" x 18'
Black Extruded Corner	6" x 20'

## TRIM

NOMINAL SIZE	ACTUAL SIZE	LENGTH
1" x 3"	3/4" x 2 1/2"	18'
1" x 4"	3/4" x 3 1/2"	18'
1" x 5"	3/4" x 4 1/2"	18'
1" x 6"	3/4" x 5 1/2"	18'
1" x 8"	3/4" x 7 1/4"	18'
1" x 10"	3/4" x 9 1/4"	18'
1" x 12"	3/4" x 11 1/4"	18'
1" x 16"	3/4" x 15 1/4"	18'
5/4" x 4"	1" x 3 1/2"	18'
5/4" x 5"	1" x 4 1/2"	18'
5/4" x 6"	1" x 5 1/2"	18'
5/4" x 8"	1" x 7 1/4"	18'
5/4" x 10"	1" x 9 1/4"	18'
5/4" x 12"	1" x 11 1/4"	18'
5/4" x 16"	1" x 15 1/4"	18'

## SHEETS

ACTUAL SIZE	LENGTH
1/2" x 4' x 10'	20'
3/4" x 4' x 10'	20'
1" x 4' x 10'	20'

# Beadboard

Green Atlantic PVC offers an exceptional range of beadboard options to suit any project. Our beaded sheets are available in 4' x 10' and 4' x 20' sizes. Choose from classic standard beadboard, sleek stealth beadboard, or elegant budget friendly beaded planking. For seamless installations, our stealth beadboard is available in continuous 24-foot lengths—eliminating joints where aesthetics demand perfection.



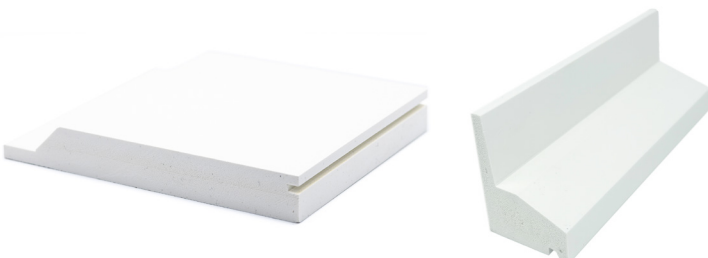
ACTUAL SIZE	LENGTH
1/2" x 4'	10'
1/2" x 4'	20'
GABP Beaded Planking	3/8" x 5 1/2" x 18'
GA001 Bead Board	1/2" x 5 1/8" x 18'
GA002 Stealth Bead Board	1/2" x 6" x 18'



# Watertable Board and Moulding

Green Atlantic PVC water tables provide the ideal foundation for any siding project. Featuring a flanged top that tucks neatly behind the first course of siding, they eliminate the need for a separate drip cap/Engineered for superior protection, each water table is precision-cut with a sloping angle to deflect water away from your home. Available in multiple widths to suit your design vision, they ensure a clean, customized finish. For applications requiring projection over stone veneer, we also offer our specialized Green Atlantic PVC water table moulding.

ACTUAL SIZE	LENGTH
1" x 5 1/2"	18'
1" x 7 1/4"	18'
1" x 9 1/4"	18'
GAWT Water Table	2" x 2 3/4" x 18'



# Column Wrap

Beautifully cover existing structural support and wood posts with our complete kit. Wraps come pre-cut and ready to assemble. Custom lengths available.



NOMINAL SIZE	ACTUAL SIZE	LENGTH
4" x 4"	1/2" x 3 3/4" I.D. x 4 3/4" O.D.	10'
6" x 6"	1/2" x 5 3/4" I.D. x 6 3/4" O.D.	10'
8" x 8"	1/2" x 8 1/2" I.D. x 9 1/2" O.D.	10'

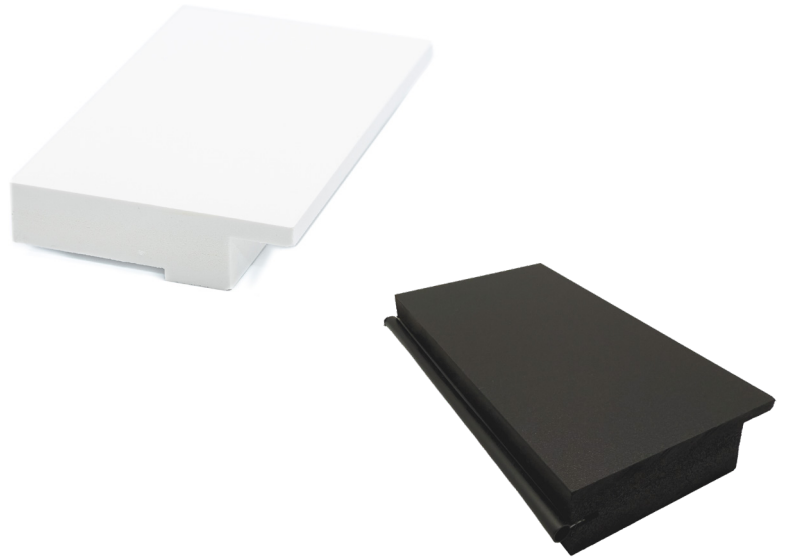


# Specialty Trim Boards

Green Atlantic offers specialty trim boards designed for use around windows and doors. These profiles are designed for use with various siding applications and new construction windows with nailing fins.

Specialty trim boards are also available in custom sizes.

	BOARD TYPE	LENGTH
5/4" x 4"	Siding rabbet	18'
5/4" x 4"	Siding and nail flange rabbet	18'
5/4" x 4"	Nail flange rabbet	18'



# Soffit System

Green Atlantic offers vented soffits in 3 different widths to meet the demands of various architectural designs. Green Atlantic offers notched Frieze board profiles designed to accept our 1/2" soffit material.

The same concept holds true with our notched fascia boards which are available in multiple widths. Green Atlantic soffits are available in 20' lengths in order to limit the joints and keep your project looking beautiful.



PRODUCT	ACTUAL SIZE	LENGTH	
Soffit	1/2" x 12"	10'	
	1/2" x 16"	10'	
	1/2" x 24"	10'	
Notched Fascia	3/4" x 7 1/4"	18'	
Frieze Board	1" x 5 1/2"	18'	

# Board and Batten

Discover the superior quality of Green Atlantic PVC for your board and batten siding needs. Our premium Green Atlantic PVC sheets and PVC battens deliver exceptional durability and a flawless finish. With our impressive 20' long sheets, customers can achieve a seamless installation from the foundation to the roofline, eliminating unsightly joints and ensuring a polished, professional look.

Complement your design with 3/4" Green Atlantic window and door trim, along with 3/4" solid corners that provide stunning visual appeal and long-lasting performance. Trusted by industry professionals, the Green Atlantic board and batten system stands out as one of the best in the market, combining innovation, aesthetics, and reliability for your exterior projects.



## Custom Sizes

Green Atlantic PVC currently comes in many different widths, lengths, and thicknesses. We understand that our stock sizes may not always fulfill the demands of a rapid growing market. If you have a specific request for something that we do not currently offer, Green Atlantic can produce many custom sizes and profiles.



Whether you are using our PVC for building or manufacturing, we can help grow your company with our ability to create sizes and profiles specifically tailored to you. Sign manufacturing, cabinet making, boat building, and store displays are just a few examples of where Green Atlantic PVC can be used.

Minimum order quantities may be required for custom orders. All Green Atlantic PVC must be purchased through a certified Green Atlantic dealer. For more information on where to buy Green Atlantic PVC email [info@greenatlanticpvc.com](mailto:info@greenatlanticpvc.com).

**Concealed  
Edge Trim**



**Frieze Board**  
1" x 3 1/2"



**Fascia Trim  
Board**



**GA 45 Crown**  
9/16" x 5 1/2"



**GA 937 Sill Nose**  
1 3/8" x 4 5/16"



**Sheets**



**Beadboard  
Soffit**

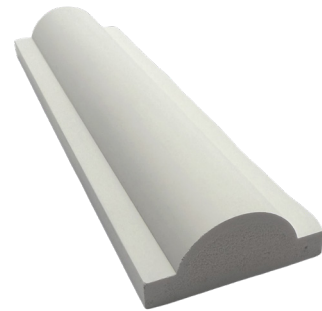
1/2" x 4' x 10'





## Competitive Advantages

Green Atlantic PVC sets the industry standard with exclusive boards and mouldings unavailable anywhere else. For instance, our 1mm and 2mm PVC sheets are ideal for flashing applications or those specialized scenarios where standard 1/4" sheets from competitors simply won't suffice. We also offer distinctive decorative mouldings, such as the flat astragal profile—perfect for adding ornate details to historical homes and faithfully replicating existing architectural elements. At Green Atlantic PVC, innovation is unmatched, and we're continually advancing to remain the leader in the industry.



Issue Date: 09-09-2021  
Revision Date: 09-15-2022  
Renewal Date: 09-30-2023

DIVISION: 06 - Woods, Plastics, and Composites  
Section: 06 65 00 - Plastic Trim

REPORT HOLDER:  
GREEN ATLANTIC  
1384 HARTFORD NEW LONDON TPKE  
OAKDALE, CT 06370  
860-288-5484  
[www.greenatlanticpvc.com](http://www.greenatlanticpvc.com)

REPORT SUBJECT:  
*Green Atlantic PVC*

### 1.0 SCOPE OF EVALUATION

1.1. This research report addresses compliance with the following Codes:

- 2021 *International Building Code*® (IBC)
- 2021 *International Residential Code*® (IRC)

1.2. *Green Atlantic PVC* has been evaluated for the following properties:

- Durability
- Surface Burning
- Termite Resistance
- Corrosion Resistance
- Weather Resistance
- Structural-negative-transverse wind loads on soffits

1.3. *Green Atlantic PVC* been evaluated for the following uses:

- *Green Atlantic PVC* trim boards are rigid cellular PVC solid cross sections intended for use as corner boards, soffits, fascia, battens, door pilasters, frieze boards, nonload-bearing rake boards, architectural millwork and door and window trim on buildings of combustible, nonfire-resistance rated construction.

### 2.0 STATEMENT OF COMPLIANCE

2.1. *Green Atlantic PVC* complies with the Codes listed in Section 1.1, for the properties stated in Section 1.2 and uses stated in Section 1.3, when installed as described in this report, including the Conditions of Use stated in section 6.0.

### 3.0 DESCRIPTION

3.1. *Green Atlantic PVC* trim boards are manufactured with expanded poly-vinyl-chloride (cellular PVC) using an extrusion process.

3.2. *Green Atlantic PVC* trim boards are supplied with either a smooth surface or woodgrain textured finish. They are available in nominal widths of 3, 4, 5, 6, 8, 10, 12, and 16 inches; nominal thicknesses of 1/2, 3/4, and 5/4 inches.

### 4.0 PERFORMANCE CHARACTERISTICS

4.1. Materials used have a flame spread index less than 200 when tested in accordance with ASTM E 84.

4.2. Materials used are deemed equivalent to preservative treated or naturally durable wood for resistance to weathering effects and attack from termites.

4.3. Materials used are not affected by corrosion due to contact with ACQ-D preservative-treated wood.

4.4. Soffit assemblies consisting of 1/2 inch x 11-1/4 inch wide boards installed on framing spaced 16 inches on center have a maximum allowable design load of 25 psf for negative (suction) wind pressure when attached to SYP (G=0.55) wood framing. Installation consists of two 8d finish nails (2.5 inch long) installed in each wood framing member, positioned 3/4 inches from each boards edge.



5.0 INSTALLATION

Green Atlantic PVC must be installed in accordance with the manufacturer’s published installation instructions, the applicable Code and this Research Report. A copy of the manufacturer’s instructions must be available on the jobsite during installation.

5.1. Fasteners shall be stainless steel or hot-dipped galvanized steel and designed for wood trim and siding. Fasteners shall have blunt points and full round heads. The fastener must be long enough to penetrate the wood substrate a minimum of 1.5 inches.

5.2. Except as noted in Section 4.4 of this report, the trim boards shall be installed over solid backing material, including approved exterior sheathing or exterior wall coverings. Green Atlantic PVC fascia must be installed over an approved structural sub-fascia.

6.0 CONDITIONS OF USE

6.1. Installation must comply with this Research Report, the manufacturer’s published installation instructions and the applicable Code. In the event of a conflict, this report governs.

6.2. Green Atlantic PVC trim boards are limited to the following three construction types:

6.2.1. Nonload-bearing exterior trim on buildings of Type V-B (5B) construction under the IBC.

6.2.2. Combustible architectural trim on exterior walls of buildings of Type I, II, III, and IV construction under the IBC, limited to: 10 percent of an exterior wall surface area where the fire separation distance is less than 5 feet; and 40 feet in height above grade.

6.2.3. All buildings permitted under the IRC.

6.3. Compatibility of the supporting construction materials with all fasteners, components, and other hardware components is subject to approval by the code official.

6.4. When fasteners are installed in pressure-treated wood (preservative or fire-retardant), the appropriate adjustment factors based on the pressure-treated wood manufacturer’s recommendations or appropriate code

provisions shall be applied to reduce the capacity of the fastener.

6.5. Fasteners shall have an appropriate corrosion protection for exterior use and the substrate in which it is installed.

6.6. Only those types of fasteners and fastening methods described in this report have been evaluated for the installation of the Green Atlantic PVC trim boards. Other methods of attachment are outside the scope of this report.

6.7. All products are manufactured by Green Atlantic under a quality program with inspections by Intertek Testing Services NA, Inc.

7.0 SUPPORTING EVIDENCE

7.1. Manufacturer's drawings and installation instructions.

7.2. Reports of testing demonstrating compliance with ICC-ES AC227, Acceptance Criteria for Rigid Cellular PVC Nonload-Bearing Exterior Trim, revised June 2017.

7.3. Reports of testing in accordance with ASTM E330-14, Standard Test Method for Structural Performance of Exterior Windows, Doors, Skylights and Curtain Walls by Uniform Static Air Pressure Difference.

7.4. Documentation of an Intertek approved quality control system for the manufacturing of products recognized in this report.

8.0 IDENTIFICATION

The Green Atlantic PVC is identified with the manufacturer’s name address and telephone number, the product name (Green Atlantic PVC), the Intertek Mark, and the Code Compliance Research Report number (CCRR-0420).



CODE COMPLIANCE  
CCRR-0420



545 E. Algonquin Road • Arlington Heights • Illinois • 60005  
[intertek.com/building](http://intertek.com/building)





---

Add long-lasting, timeless beauty and value to your home with Green Atlantic PVC.





## Contact Us

 [info@greenatlanticpvc.com](mailto:info@greenatlanticpvc.com)

 [greenatlanticpvc.com](http://greenatlanticpvc.com)